



**EUROPEAN GATE  
VALVES LIMITED**

*quality gate valve manufacturer*

*range of applications*

Temperatures to 1000°c  
Differential pressures to 102 Kpa  
Where positive below.  
Abrasive - Some of the most abrasive materials are comfortably handled  
Lump Size - Depends on valve opening size.  
Openings to 600mm square

**reliability**  
**maximum**  
**life**

*features*

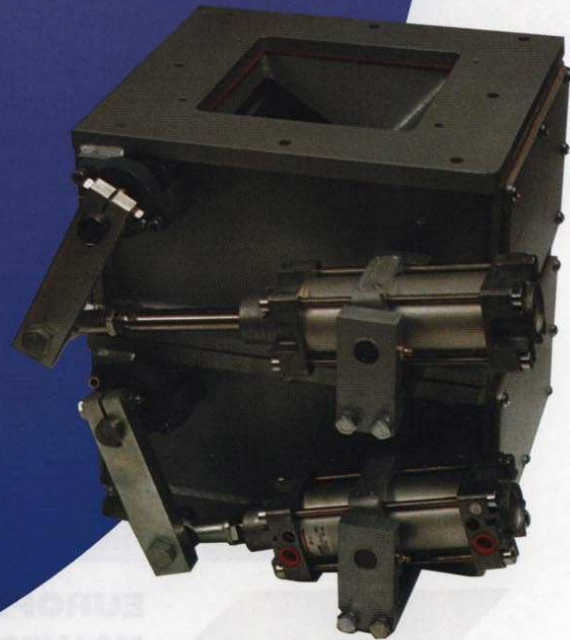
Dual access covers, Outboard bearings  
Adjustable packed shaft seals as standard  
VDMA ISO standard cylinders  
Removable seat and flap with the valve in situ. Regrindable seat and flap  
All metric standard components

*material of construction*

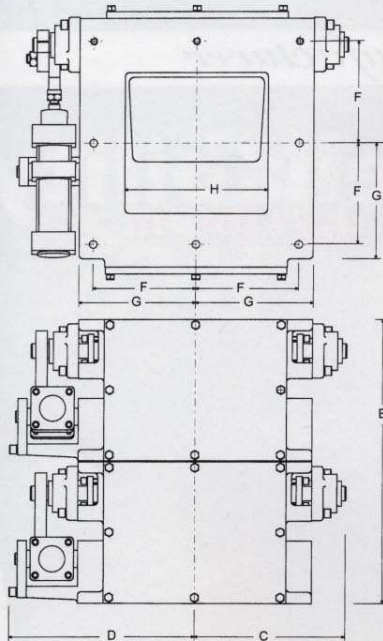
Valve bodies have been made in Cast Iron, Cast High Nickel Alloys, Cast Aluminium, Fabricated Stainless and Carbon Steels. Seats and Flaps are generally made from Cast HiChrome Iron or Stainless Steel  
All other components to suit process conditions to give maximum life and reliability

*actuation options*

Linear Pneumatic Cylinders  
Rotary Pneumatic Actuators  
Electric motor via cams  
Electric motor via push rods.  
Gravity or Manual.  
Hydraulic actuators.

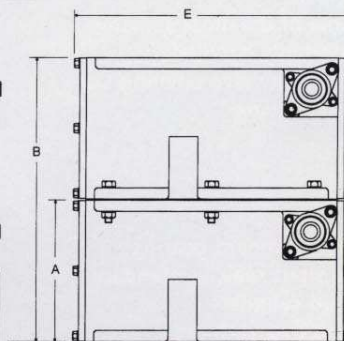


**CL & FL Series**  
**Double Flap Gate Valves**



SIZE	A	B	C	D	E	F	G	H
150	170	342	185	235	340	120	140	150
200	200	402	215	275	390	150	180	200
250	250	502	262	322	480	180	205	250
300	300	602	320	390	580	220	250	300
400	400	802	460	530	800	200	360	400
600	600	1202	580	680	1040	225	500	600

(150/200 - 8 HOLES M10) (250 - 8 HOLES M12)  
 (300 - 8 HOLES M16) (400 - 12 HOLES M20) (600 - 16 HOLES M20)



### optional equipment

Sequence control with Mini-PLC. Flap position indication through shaft mounted contact limit switches, non-contact proximity switches or cylinder mounted reed switches. Heat shields, shaft air cooling and shaft extensions for valve insulation in high temperature applications. Purged high efficiency shaft seals.



#### CAPACITY M<sup>3</sup>/hour at 6 cycles per min

Valve Alone	With Spacer between valves				
	75mm	100mm	150mm	300mm	
150	0.6	1.4	1.7	2.3	4.1
200	0.9	2.3	2.7	3.6	6.3
250	1.4	3.7	4.4	5.9	10.4
300	2.9	6.1	7.2	9.3	15.6

#### AIR CONSUMPTION

150	6.8 litres per min
200	7.5 litres per min
250	9.4 litres per min
300	30 litres per min

Based on air supply at 550kpa and valves operating at 6 cycles/min



## EUROPEAN GATE VALVES LIMITED

ASH STREET, BRADLEY, BILSTON,  
 WOLVERHAMPTON, ENGLAND. WV14 8UN

Tel: 01902 409590 Fax: 01902 409736

e-mail: sales@egatevalves.co.uk

web: www.egatevalves.co.uk