



**EUROPEAN GATE
VALVES LIMITED**

quality gate valve manufacturer

range of applications

Temperatures to 1000 °c
Differential pressures to 102 Kpa
Where positive below.
Abrasiveness - Some of the most abrasive materials are comfortably handled
Lump Size - Depends on valve opening size.
Openings to 600mm square and 900mm x 450mm in operation

reliability
maximum
life

features

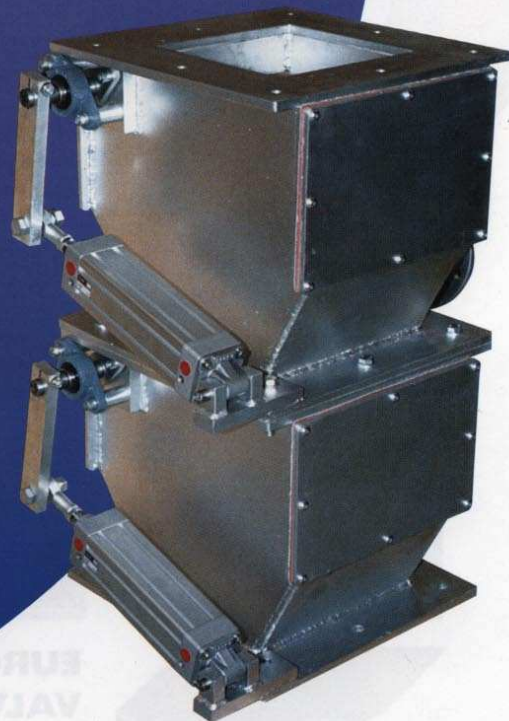
Dual access covers Outboard bearings
Adjustable packed shaft seals as standard
VDMA ISO standard cylinders
Removable seat and flap with the valve insitu. Re grindable seat and flap
All metric standard components

material of construction

Valve bodies have been made in Casts Iron, Cast High Nickel Alloys, Cast Aluminium, Fabricated Stainless and Carbon Steels.
Seats and Flaps are generally made from Cast HiChrome Iron or Stainless Steel
All other components to suit process conditions to give maximum life and reliability

actuation options

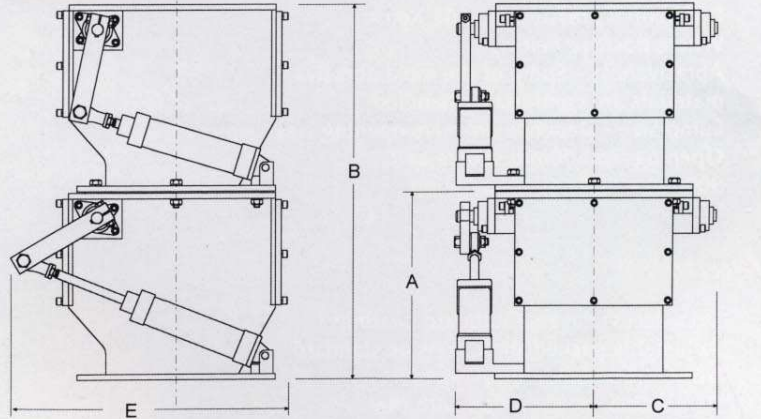
Linear Pneumatic Cylinders
Rotary Pneumatic Actuators
Electric motor via cams
Electric motor via push rods.
Gravity or Manual.
Hydraulic actuators.



CH & FH Series
Double Flap Gate Valves

| SIZE | A | B | C | D | E | F | G | H |
|------|------|------|-----|-----|------|-----|-----|-----|
| 150 | 320 | 641 | 185 | 235 | 400 | 120 | 140 | 150 |
| 200 | 350 | 701 | 225 | 262 | 516 | 150 | 180 | 200 |
| 250 | 420 | 841 | 276 | 308 | 620 | 180 | 220 | 250 |
| 300 | 500 | 1002 | 320 | 390 | 710 | 220 | 250 | 300 |
| 400 | 720 | 1442 | 460 | 530 | 1000 | 200 | 360 | 400 |
| 600 | 1000 | 2002 | 580 | 680 | 1220 | 225 | 500 | 600 |

(150/200 - 8 HOLES M10) (250 - 8 HOLES M12)
(300 - 8 HOLES M16) (400 - 12 HOLES M20)



optional equipment

Sequence control with Mini-PLC. Flap position indication through shaft mounted contact limit switches, non-contact proximity switches or cylinder mounted reed switches. Heat shields, shaft air cooling and shaft extensions for valve insulation in high temperature applications. Purged high efficiency shaft seals.



CAPACITY M³/hour at 6 cycles per min

| Valve Alone | With Spacer between valves | | | | |
|-------------|----------------------------|-------|-------|-------|------|
| | 75mm | 100mm | 150mm | 300mm | |
| 150 | 1.7 | 2.6 | 2.9 | 3.4 | 5.2 |
| 200 | 2.5 | 3.8 | 4.2 | 5.2 | 7.8 |
| 250 | 4.1 | 6.2 | 6.9 | 8.5 | 12.9 |
| 300 | 8.3 | 11.4 | 12.5 | 14.6 | 20.8 |

AIR CONSUMPTION

| | |
|-----|--------------------|
| 150 | 7.2 litres per min |
| 200 | 8.1 litres per min |
| 250 | 10 litres per min |
| 300 | 36 litres per min |

Based on air supply at 550kpa and valves operating at 6 cycles/min



EUROPEAN GATE VALVES LIMITED

ASH STREET, BRADLEY, BILSTON,
WOLVERHAMPTON, ENGLAND. WV14 8UN
Tel: 01902 409590 Fax: 01902 409736
e-mail: sales@egatevalves.co.uk
web: www.egatevalves.co.uk