



European
GATE VALVES
LIMITED

*robust
accessible
lasting*

Short Series Double Flap Valves

range of applications

- Temperatures to 1000°C
- Differential pressures to 102 Kpa Where positive below.
- Abrasiveness - Some of the most abrasive materials are comfortably handled
- Lump Size - Depends on valve opening size.
- Openings to 600mm square

features

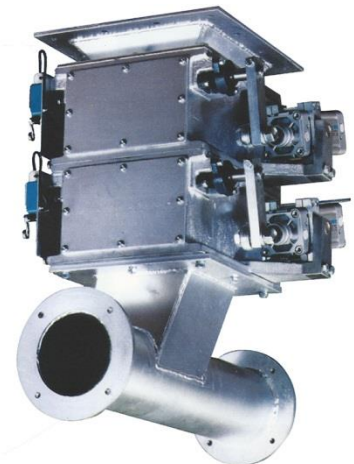
- Dual access covers, Outboard bearings
- Adjustable packed shaft seals as standard VDMA ISO standard cylinders
- Removable seat and flap with the valve in situ. Re grindable seat and flap
- All metric standard components

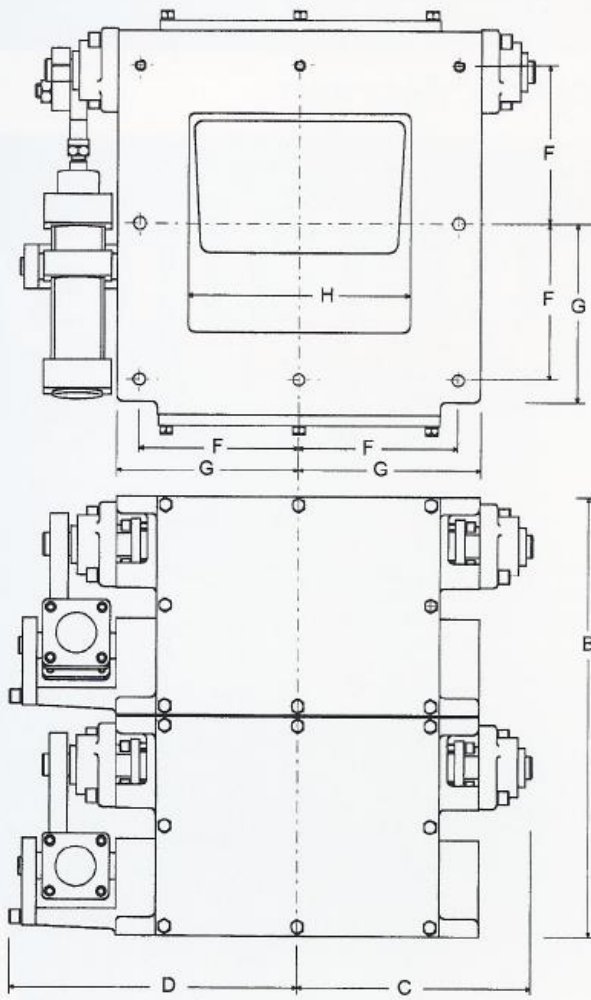
materials of construction

- Valve bodies have been made in Cast Iron, Cast High Nickel Alloys, Cast Aluminium, Fabricated Stainless and Carbon Steels. Seats and Flaps are generally made from Cast HI Chrome Iron or Stainless Steel
- All other components to suit process conditions to give maximum life and reliability

actuation options

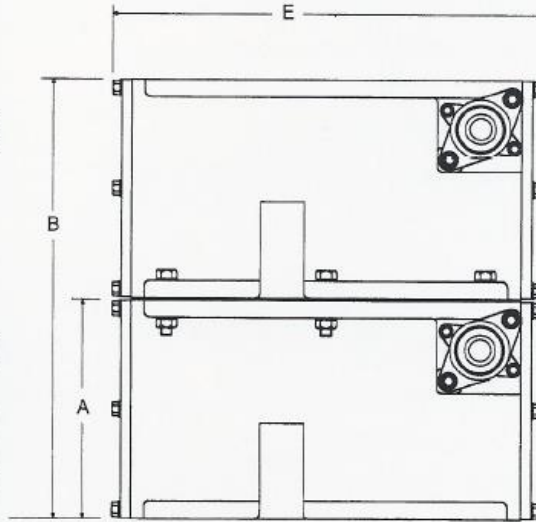
- Linear Pneumatic Cylinders
- Rotary Pneumatic Actuators
- Electric motor via cams
- Electric motor via push rods.
- Gravity or Manual.
- Hydraulic actuators.





SIZE	A	B	C	D	E	F	G	H
150	170	342	185	235	340	120	140	150
200	200	402	215	275	390	150	180	200
250	250	502	262	322	480	180	205	250
300	300	602	320	390	580	220	250	300
400	400	802	460	530	800	200	360	400
600	600	1202	580	680	1040	225	500	600

(150/200 - 8 HOLES M10) (250 - 8 HOLES M12)
 (300 - 8 HOLES M16) (400 - 12 HOLES M20) (600 -16 HOLES M20)



optional equipment

Sequence control with Mini-PLC. Flap position indication through shaft mounted contact limit switches, non-contact proximity switches or cylinder mounted reed switches. Heat shields, shaft air cooling and shaft extensions for valve insulation in high temperature applications. Purged high efficiency shaft seals

CAPACITY						AIR CONSUMPTION	
M ³ /hour at 6 cycles per min							
Valve Alone	With Spacer between valves						
	75mm	100mm	150mm	300mm			
150	0.6	1.4	1.7	2.3	150	6.8 litres per min	
200	0.9	2.3	2.7	3.6	200	7.5 litres per min	
250	1.4	3.7	4.4	5.9	250	9.4 litres per min	
300	2.9	6.1	7.2	9.3	300	30 litres per min	
						Based on air supply at 550kpa and valves operating at 6 cycles/min	



European Gate Valves Limited
 15 Temple Road, Stowmarket, Suffolk
 IP14 1AT, UNITED KINGDOM
 Tel +44(0)1902 409590
 sales@egatevalves.co.uk
www.egatevalves.co.uk